

Green Valley Ranch East Metropolitan District No. 10
Initial Boundaries

LEGAL DESCRIPTION

A PARCEL OF LAND BEING A PORTION OF THE NORTHWEST QUARTER OF SECTION 13, TOWNSHIP 3 SOUTH, RANGE 66 WEST OF THE SIXTH PRINCIPAL MERIDIAN, IN THE COUNTY OF ADAMS, STATE OF COLORADO, MORE PARTICULARLY DESCRIBED AS FOLLOWS:

COMMENCING AT THE SOUTHEAST CORNER OF SAID NORTHWEST QUARTER;

THENCE ALONG THE SOUTH LINE OF SAID NORTHWEST QUARTER, SOUTH 89°40'33" WEST, A DISTANCE OF 180.68 FEET;

THENCE DEPARTING SAID SOUTH LINE, NORTH 00°19'27" WEST, A DISTANCE OF 60.00 FEET TO A LINE PARALLEL WITH AND DISTANT 60.00 FEET NORTH OF SAID SOUTH LINE AND THE **POINT OF BEGINNING**;

THENCE ALONG SAID PARALLEL LINE, SOUTH 89°40'33" WEST, A DISTANCE OF 50.00 FEET;

THENCE DEPARTING SAID PARALLEL LINE, NORTH 00°19'27" WEST, A DISTANCE OF 20.00 FEET;

THENCE NORTH 89°40'33" EAST, A DISTANCE OF 50.00 FEET;

THENCE SOUTH 00°19'27" EAST, A DISTANCE OF 20.00 FEET TO THE **POINT OF BEGINNING**.

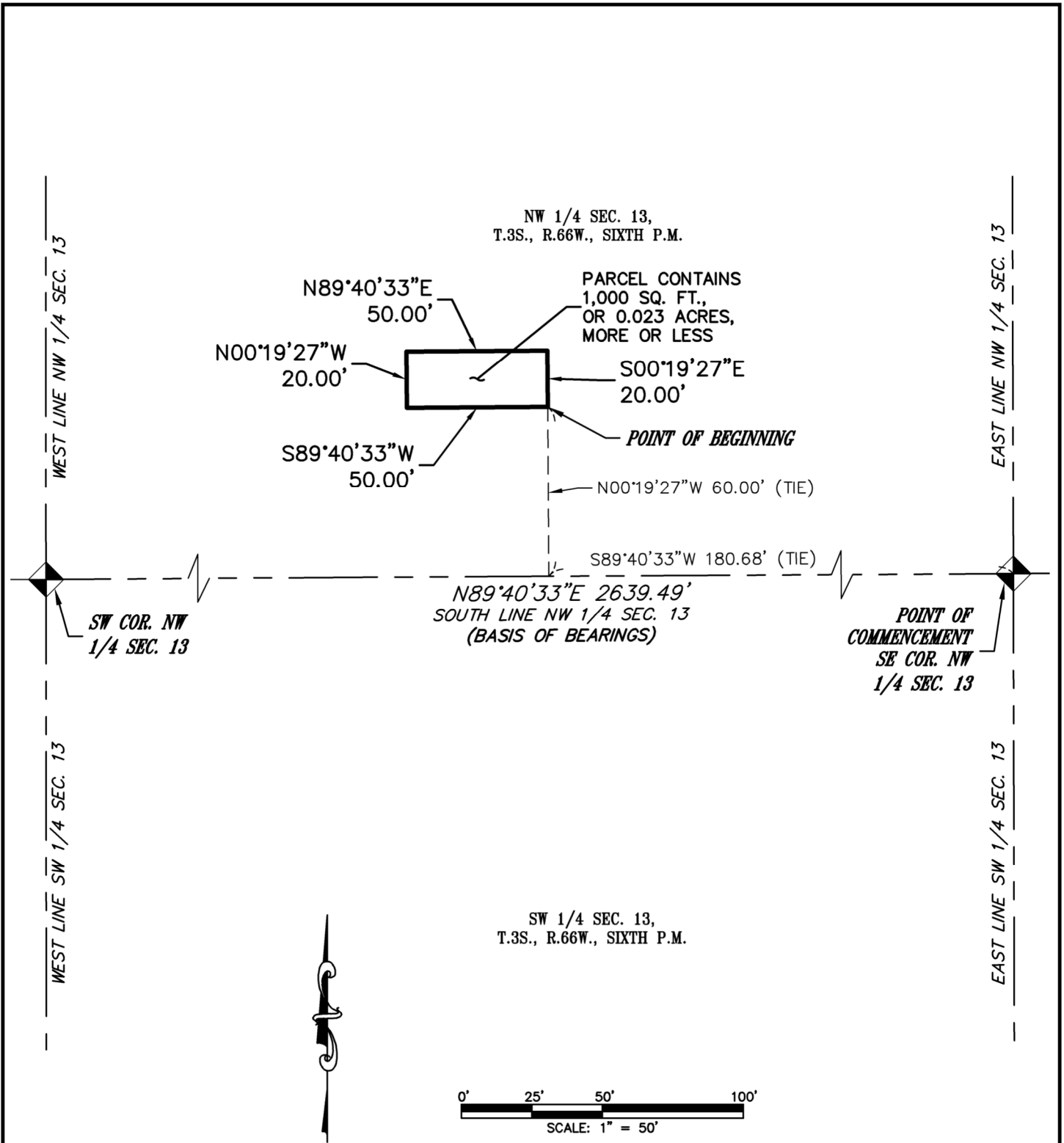
CONTAINING AN AREA OF 0.023 ACRES, (1,000 SQUARE FEET), MORE OR LESS.

ILLUSTRATION ATTACHED AND MADE A PART HEREOF.

DANIEL E. DAVIS, PLS 38256
COLORADO LICENSED PROFESSIONAL LAND SURVEYOR
FOR AND ON BEHALF OF AZTEC CONSULTANTS, INC.
300 E. MINERAL AVENUE, SUITE 1
LITTLETON, CO 80122

Green Valley Ranch East Metropolitan District No. 10
Initial Boundaries

ILLUSTRATION TO DESCRIPTION



NOTE: THIS ILLUSTRATION DOES NOT REPRESENT A MONUMENTED LAND SURVEY AND IS ONLY INTENDED TO DEPICT THE ATTACHED LEGAL DESCRIPTION.

PATH: Q:\19320-19-GVRE Metro Dist\Draw\EXH
DWG NAME: AURORA 310 DIR PAR 5
DWG: RDS CHK: JRW
DATE: 04/28/2022
SCALE: 1" = 50'

AZTEC
CONSULTANTS, INC.

300 East Mineral Ave,
Suite 1
Littleton, Colorado 80122
Phone: (303)713-1898
Fax: (303)713-1897
www.aztecconsultants.com

DIRECTOR PARCEL 5
NW 1/4 SEC. 13, T3S, R66W, 6TH P.M.
ADAMS COUNTY, COLORADO

JOB NUMBER 19320-19 2 OF 2 SHEETS